



TOURISM

Navigo T Euro 6

DIMENSIONS

Overall Length	(mm)	: 7721/8395
Overall Width	(mm)	: 2265
Overall Height	(mm)	: 3275
Wheelbase	(mm)	: 3866/4520
Front Track	(mm)	: 1963
Rear Track	(mm)	: 1696
Front Length	(mm)	: 1640/1465
Rear Length	(mm)	: 2215/2410
Interior Height	(mm)	: 2020

WEIGHTS

Axle Capacity [Front]	(kg)	: 4000
Axle Capacity [Rear]	(kg)	: 6000
Perm. Gross Weight	(kg)	: 10000

PASSENGER CAPACITY

Seated	:	31+1 (7,7m)
	:	35+1 (8,4m)

ENGINE

Manufacturer	:	Cummins
Engine Type	:	ISBe4.5E6
Number of Cylinders	:	4
Engine Volume	:	4462 cc
Max. Rating	:	180 HP / 2300 rpm
Max. Torque	:	700 Nm / 1200 rpm
Engine Location	:	Front Located

TRANSMISSION

Manufacturer	:	Allison Automatic Transmission 6 Forward, 1 Reverse
--------------	---	--

SUSPENSION

Front	:	Hydraulic (Rigid Type) Double effective shock absorbers
	:	Parabolic cushioning springs
Rear	:	Hydraulic (Rigid Type) (7,7m) Pneumatic (Air Type) (8,4m) Double effective shock absorbers Parabolic cushioning springs

DIFFERENTIAL

Manufacturer	:	Ege Endustry
Diff. Ratio	:	3.31 (3.73 optional)

BRAKES

Service Brake	:	Full air ABS
Front and Rear	:	Disc
Hand Brake	:	Effect to rear wheels

AXLES

Front Axle	:	Rigid
Rear Axle	:	Rigid

STEERING

Steering Type	:	Hydraulic Left Located
---------------	---	---------------------------

CLUTCH

Clutch Type	:	Air assist single disc Servo
-------------	---	---------------------------------

DOORS

	:	Single flap outward
Front	:	swinging
	:	Single flap outward
Rear	:	swinging

ELECTRICAL

Batteries	:	2x12 Volt, 88 Ah 2x12 Volt, 105 Ah (for A/C)
Alternator	:	24 Volt, 90A

TYRES

Tyres	:	235/75 R 17.5 Double tyres at rear
-------	---	---------------------------------------

LUGGAGE CAPACITY

(m³) : 3

GRADEABILITY

Gradeability (%) : 40%

FUEL TANK CAPACITY

(lt) : 100

ADBLUE TANK CAPACITY

(lt) : 21

STANDARD AND OPTIONAL FEATURES

Powertrain

ABS, ASR	S
Manual Transmission (EATON) with or without retarder	0
Hydraulic(Rigid Type) rear suspension (8,4m)	0

AC

AC (12kW KONVEKTA)	S
--------------------	---

Windows

Tinted double glazed side windows	S
Curtains for side and rear windows	S
Heated driver's side window	S
Heated rear view mirrors	S

Seating

Reclining passenger seats with 2-point seat belt	S
Adjustable, air suspended driver's seat with three-point seat belt	S
Passenger seats with headrest cover	S
Reclining passenger seats with 3-point seat belt	0
33+1 without guide seat (7,7m)	0
37+1 without guide seat (8,4m)	0
Foldable hostess seat	0

Safety

Speed Limitor System - on ECU 100 km/h	S
Rear view camera	0
Rear door with safety control	0
Rear view parking sensor	0

Passenger info

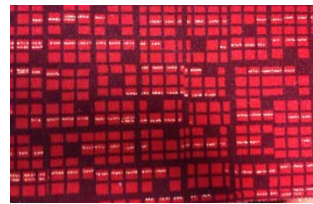
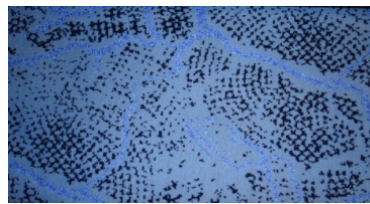
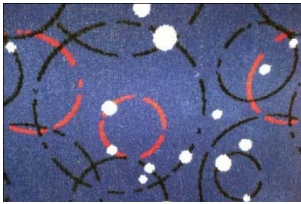
LCD Screen (ACTIA) / DVD Unit (KENWOOD) / GPS and Navigation System	S
Announcement System	S

Body

Front and rear fog lamps and third brake lamp	S
Ceiling lighting / Singular lamps	S
Front sun visors	S
Metallic colour	0

Other Features

Batteries main switch	S
Digital clock	S
Digital tachograph	S
Partition panels with tray tables	S
Individual reading lights	S
Overhead parcel racks	S
Carpet - aisle floor	S
Refrigerator without water heater	S
Ski rack provision	S
Roof hatch	S
Fire extinguishers	S
First aid kit	S
Refrigerator with water heater	0



*Otokar reserves the right to change specifications standards and options.

Otokar Otomotiv ve Savunma Sanayi A.Ş.
Aydınevler Mah. Dumlupınar Cad. No:58 A
Blok Kucukyali, İstanbul, TURKEY
www.otokar.com